



SPIRAL PIPE AND FITTINGS



Round and Ready Program

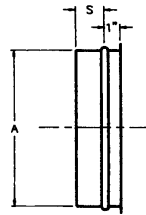
- Fabricated from G90 galvanized materials
- Meets Smacna 95' high pressure standards
- Materials shipped next day direct from Hamlin warehouse

SPIRAL PIPE

SIZE	PRICE
4" dia. 10'0" 26 ga	\$15.00
6" dia. 10'0" 26 ga	20.00
8" dia. 10'0" 26 ga	26.00
10" dia. 10'0" 26 ga	33.00
12" dia. 10'0" 26 ga	39.00
14" dia. 10'0" 26 ga	46.00
16" dia. 10'0" 24 ga	65.00
18" dia. 10'0" 24 ga	75.00
20" dia. 10'0" 24 ga	86.00
22" dia. 10'0" 24 ga	94.00
24" dia. 10'0" 24 ga	99.00
26" dia. 10'0" 24 ga	108.00
28" dia. 10'0" 22 ga	140.00
30" dia. 10'0" 22 ga	158.00

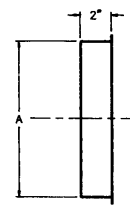
END PIECES

INSIDE PLUG EP



SIZE	PRICE
4"	\$4.80
6"	4.90
8"	5.50
10"	5.70
12"	6.20
14"	8.00
16"	11.50
18"	17.40
20"	18.50
22"	20.80
24"	23.00
26"	26.50
28"	31.70
30"	35.40

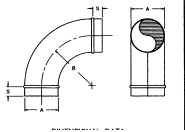
OUTSIDE CAP EC



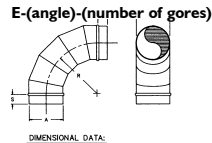
SIZE	PRICE
4"	\$4.80
6"	4.90
8"	5.50
10"	5.70
12"	6.20
14"	8.00
16"	11.50
18"	17.40
20"	18.50
22"	20.80
24"	23.00
26"	26.50
28"	31.70
30"	35.40

ELBOWS

DIE STAMPED 90° E-90-1



GORED ELBOW E-90-5, E-45-3

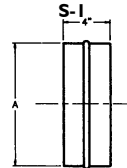


SIZE	PRICE
4" SE90	\$10.30
6" SE90	12.40
8" SE90	19.60
10" E90-5	28.40
12" E90-5	40.60
14" E90-5	48.50
16" E90-5	59.10
18" E90-5	87.20
20" E90-5	100.50
22" E90-5	118.10
24" E90-5	132.20
26" E90-5	140.40
28" E90-5	186.10
30" E90-5	214.00

SIZE	PRICE
4" SE45	\$9.10
6" SE45	11.40
8" SE45	13.20
10" E45-3	20.80
12" E45-3	24.50
14" E45-3	29.30
16" E45-3	44.20
18" E45-3	48.70
20" E45-3	53.40
22" E45-3	61.00
24" E45-3	66.00
26" E45-3	71.50
28" E45-3	86.20
30" E45-3	94.20

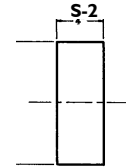
COUPLINGS

PIPE COUPLING



SIZE	PRICE
4" Internal	\$3.10
6" Internal	3.20
8" Internal	3.90
10" Internal	5.20
12" Internal	5.90
14" Internal	6.70
16" Internal	7.70
18" Internal	8.50
20" Internal	8.80
22" Internal	9.30
24" Internal	10.30
26" Internal	12.20
28" Internal	13.90
30" Internal	15.30

FITTING COUPLING



SIZE	PRICE
4" External	\$3.10
6" External	3.20
8" External	3.90
10" External	5.20
12" External	5.90
14" External	6.70
16" External	7.70
18" External	8.50
20" External	8.80
22" External	9.30
24" External	10.30
26" External	12.20
28" External	13.90
30" External	15.30



- Materials shipped FOB from Hamlin warehouse in Benson, NC.
- Freight cost added to order

L. R. GORRELL COMPANY

PRICES SUBJECT TO CHANGE WITHOUT NOTICE! Minimum Order is \$25.00

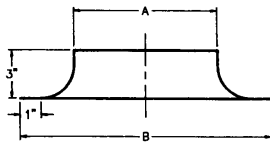
SPIRAL PIPE AND FITTINGS



Round and Ready Program

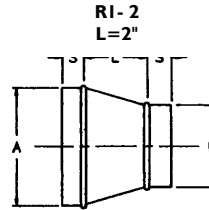
- Fabricated from G90 galvanized materials
- Meets Smacna 95' high pressure standards
- Materials shipped next day direct from Hamlin warehouse

MINI BELLMOUTH



SIZE	PRICE
4" MR BM	\$6.40
6" MR BM	7.00
8" MR BM	8.10
10" MR BM	11.00
12" MR BM	11.50
14" MR BM	17.20
16" MR BM	26.00
18" MR BM	31.70
20" MR BM	36.90
22" MR BM	40.90
24" MR BM	46.70
26" MR BM	83.60
28" MR BM	93.90
30" MR BM	102.60

CONCENTRIC REDUCER

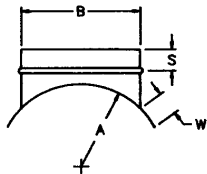


SIZE	PRICE
6x4 R1-2	\$12.30
8x6 R1-2	14.70
10x8 R1-2	15.80
12x10 R1-2	17.20
14x12 R1-2	21.20
16x14 R1-2	25.00
18x16 R1-2	30.80
20x18 R1-2	34.80
22x20 R1-2	38.80
24x22 R1-2	40.90
26x24 R1-2	47.30
28x26 R1-2	55.30
30x28 R1-2	58.80



SIZE	PRICE
8x4 R1-4	\$17.70
10x6 R1-4	18.80
12x8 R1-4	20.50
14x10 R1-4	25.10
16x12 R1-4	29.70
18x14 R1-4	36.60
20x16 R1-4	41.50
22x18 R1-4	46.00
24x20 R1-4	48.70
26x22 R1-4	56.30
28x24 R1-4	65.80
30x26 R1-4	70.00

STRAIGHT SADDLE TAP TST



SIZE	PRICE	SIZE	PRICE
4" TST on Flat	\$5.20	4" TST on 06"	\$9.10
6" TST on Flat	3.70	6" TST on 08"	10.40
8" TST on Flat	4.40	8" TST on 10"	12.60
10" TST on Flat	4.90	10" TST on 12"	14.30
12" TST on Flat	5.60	12" TST on 14"	15.80
14" TST on Flat	7.10	14" TST on 16"	17.20
16" TST on Flat	7.20	16" TST on 18"	18.00
18" TST on Flat	9.00	18" TST on 10"	18.90
20" TST on Flat	9.70	20" TST on 22"	19.80
22" TST on Flat	14.60	22" TST on 24"	20.80
24" TST on Flat	19.80	24" TST on 26"	22.50
26" TST on Flat	21.20	26" TST on 28"	25.60
28" TST on Flat	22.70	28" TST on 30"	27.00
30" TST on Flat	24.30		

STRAP & BRACKET

SIZE	PRICE
Bracket #BA3	\$.90
1" strap, galv., 250' roll	38.00

ACCESS DOOR

SIZE	PRICE
8X4 on 06"	\$23
8X4 on 08"	23
8X4 on 10"	23
8X4 on 12"	23
8X4 on 14"	23
8X4 on 16"	23
12x8 on 18"	30.20
12x8 on 20"	30.20
16x12on22	42.30
16x12on24	42.30
16x12on26	42.30
16x12on28	42.30
16x12on30	42.30

SEALER

SIZE	PRICE
ProSeal	\$21.00



- Materials shipped FOB from Hamlin warehouse in Benson, NC.
- Freight cost added to order