

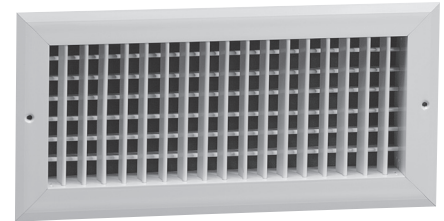
REGISTERS AND GRILLES - SUPPLY & RETURNS

[CFM Range is only a guide. See Manufacturer Catalog for complete data. All NC Levels in Acceptable Range < 32.]

TUTTLE & BAILEY Model **A647** - Double Deflection Aluminum Supply Register with Opposed Blade Damper - Vertical Front Blades

Neck Size	CFM Range	Price Each
6 x 6	75-175	\$25
8 x 4	75-175	25
8 x 6	100-235	26
10 x 4	85-195	26
10 x 6	130-310	28
10 x 10	210-480	36
12 x 4	100-235	28
12 x 6	150-350	28
12 x 8	210-480	32
12 x 12	250-580	40
14 x 6	170-390	32
14 x 8	250-580	34
16 x 6	210-480	34
16 x 8	300-700	38
16 x 10	330-760	40
18 x 6	230-530	40
18 x 8	300-700	40
18 x 10	410-950	46

Neck Size	CFM Range	Price Each
18 x 12	470-1090	48
20 x 6	250-580	\$42
20 x 8	330-760	42
20 x 10	410-950	50
20 x 12	500-1100	52
24 x 6	300-700	50
24 x 8	410-950	52
24 x 10	500-1100	54
24 x 12	600-1400	60
30 x 6	375-820	62
30 x 8	470-950	66
30 x 10	600-1400	78
30 x 12	680-1580	88
36 x 6	470-1090	78
36 x 8	600-1400	80
36 x 10	680-1580	92
36 x 12	900-2100	112
36 x 18	1400-2800	138



FINISH: White

TUTTLE & BAILEY Model **A70D** - Aluminum Return/Exhaust Grille - Horizontal Blades

Neck Size	CFM Range	Price Each
6 x 6	50-150	\$10
8 x 8	90-260	12
10 x 6	80-240	12
10 x 8	110-330	12
10 x 10	140-400	14
12 x 6	90-260	14
12 x 8	140-400	14
12 x 12	200-600	16
14 x 6	110-330	14
14 x 8	160-480	16
14 x 14	270-820	18
16 x 8	190-570	16
16 x 10	200-600	18
16 x 16	360-1000	22
18 x 12	300-900	20
18 x 18	450-1000	28
20 x 8	200-600	18

Neck Size	CFM Range	Price Each
20 x 12	310-930	\$22
20 x 16	450-1000	28
20 x 20	500-1500	32
24 x 8	270-820	24
24 x 12	400-1000	24
24 x 18	600-1500	34
24 x 24	800-1800	44
30 x 8	360-900	26
30 x 12	450-1200	30
30 x 18	800-1800	46
30 x 24	1000-2200	60
36 x 12	600-1500	42
36 x 18	900-2000	60
36 x 24	1200-2400	78
36 x 36	1800-3600	138
*22 x 10	350-1100	24
*22 x 22	700-2000	44



FINISH: White

* T-Bar Lay-In Mounting, Steel Construction

For Opposed Blade Damper See Model A7 on Page 9